



Mthashana
College

Technical and Vocational Education and Training

PROSPECTUS



higher education
& training

Department:
Higher Education and Training
REPUBLIC OF SOUTH AFRICA

www.mthashanacollege.co.za

VISION

To be the preferred learning centre of excellence

MISSION

To bridge the gap of skills shortages through quality teaching and learning leading to employment and self sufficiency

VALUES

Honesty

Transparency

Mutual respect

Commitment

Good communication

Integrity and excellence

Fairness

Team work

Empathy

Table of contents

PAGE

4 National Qualification Framework (NQF)

PAGE

5 Definition of NCV

PAGE

6 Civil Engineering & Building Construction (CEBC)

PAGE

7 Electrical Infrastructure Construction (IEC)

PAGE

8 Engineering & Related Design (ERD)

PAGE

9 Hospitality

PAGE

10 Office Administration

PAGE

11 Primary Agriculture

PAGE

12 Tourism

PAGE

13 National Diploma Programmes

PAGE

14 Business Management

PAGE

15 Human Resource Management

PAGE

16 Management Assistant

PAGE

17 Farming Management

PAGE

18 Financial Management

PAGE

19 Tourism Management

PAGE

20 Public Management

PAGE

21 Mechanical Engineering

PAGE

22 Electrical Engineering

PAGE

23 Civil Engineering

PAGE

24 Mechanical Management

NATIONAL QUALIFICATION FRAMEWORK (NQF)

NQF LEVEL	GRADE DESCRIPTION	CATEGORY
Level 1	General Education Certificate (Grade 9), or Adult General Education and Training Certificate	General Education & Training (GET)
Level 2	Grade 10 (School), or NC(V) Level 2 Certificate, or N1 Certificate	Further Education & Training (FET)
Level 3	Grade 10 (School), or NC(V) Level 3 Certificate, or N3 Certificate	
Level 4	National Senior Certificate (Grade 12), or National Trade Certificate (Trade School) Adult National Senior Certificate, or NC(V) Level 4 Certificate, or N3 Certificate + 2 Official Languages	
Level 5	N4, N5 and N6 National Certificate, or NC(V) Level 5 Certificate, or Higher Certificate	Higher Education & Training (HET)
Level 6	National Diploma, or Advanced Certificate	
Level 7	Bachelors Degree, or Advanced Certificate	
Level 8	Honours Degree, or Postgraduate Diploma, or Professional Qualifications Degree	
Level 9	Masters Degree	
Level 10	Doctoral Degree	



DEFINITION OF NCV

The NC(V) is a vocational programme offered at Level 2 to 4 of the National Qualifications Framework (NQF) and is offered by all public TVET Colleges countrywide. The qualification is entered to directly address the priority skills demand of the modern South African economy.

The NC(V) Qualification is designed to provide both theory and practice, thus granting students an opportunity to gain work experience during the period of study. Practical experience may be gained in either a simulated or real workshop environment.

NC(V) PROGRAMMES OFFERED BY MTHASHANA TVET COLLEGE:

Engineering Studies

- Engineering and Related Design (Fitting and Turning OR Fabrication OR Automotive Repair and Maintenance)
- Electrical Infrastructure and Building Construction (Carpentry and Roof Work OR Masonry)
- Electrical Infrastructure Construction

Business Studies:

- Office Administration

Utility Studies:

- Hospitality
- Primary Agriculture
- Tourism

NC(V) CURRICULUM

Each NC(V) Qualification has a total of 7 SUBJECTS per NQF Level:

There are three **FUNDAMENTAL SUBJECTS** which are common for all learning fields and are **COMPULSORY**. The Fundamental Subjects are:

- Life Orientation
- English First Additional Language
- Mathematics OR Mathematical Literacy

There are four **VOCATIONAL SUBJECTS** which are aimed at preparing students for the world of work, within the field of their choice. Of the four vocational subjects, one is an **ELECTIVE** subject, which allows the students to specialize in subfield.

ADMISSION AND RE-ADMISSION CRITERIA:

ENROLLING FOR THE NC(V)

Visit www.mthashanacollege.co.za and download the Admission and Re-Admission Criteria.

CIVIL ENGINEERING & BUILDING CONSTRUCTION (CEBC)

OFFERED AT NONGOMA CAMPUS

LEVEL 2-4 (ANNUAL COURSE) – DURATION:3 YEARS

WHAT IS CIVIL ENGINEERING AND BUILDING CONSTRUCTION?

The Civil Engineering and Building Construction programme covers construction, masonry building and woodworking; design, drainage and sanitation in a practical, theoretical management and design environment. This programme intergrates academic knowledge and theory with practical skills and value.

MODULES

- Drawings and Setting, Quantities and Costing
- Construction Material
- Construction Plant and Equipment
- Construction Supervision
- Construction Plaumbing

These Modules are offered at each of the different NQF Levels of study in the National Certificate (Civil Engineering Construction) qualification.

VOCATIONAL ACTIVITIES TO GAIN ACCESS TO:

- Participate in the operation and maintenance of construction equipment and machinery.
- Participate in the construction of roads, bridges, dams, railways, houses, etc.
- Take part in designing and construction of tunnels, roads, factories, reservoirs, etc.

MINIMUM ADMISSION REQUIREMENTS:

Grade 9 with Mathematics or any other Equivalent Qualification.

FUNDAMENTAL MODULES IN ALL NC(V) PROGRAMMES

English First Additional Language

Mathematics and Life Orientation



ELECTRICAL INFRASTRUCTURE CONSTRUCTION (EIC)

OFFERED AT NONGOMA & VRYHEID CAMPUSES

LEVEL 2-4 (ANNUAL COURSE)- DURATION:3 YEARS

WHAT IS ELECTRICAL INFRASTRUCTURE CONSTRUCTION?

The Electrical Infrastructure programme covers heavy current, overhead power lines as well as domestic, civil and industrial industries; light current in the form of digital and electronics in the communications, industrial electronics and sound engineering fields as well as instrumentation. This programme integrates academic knowledge and theory with practical skills and values.

MODULES

- Electrical Principles and Practice
- Workshop Practice
- Electronic Control and Digital Electronics
- Electrical Workmanship
- Electrical Systems and Construction

These Modules are offered at each of the different NQF Level of study in the National Certificate (Electrical Infrastructure Construction) qualification.

VOCATIONAL ACTIVITIES TO GAIN ACCESS TO:

- Work at a power station
- Work as an electrician at an energy producing company or power plant
- Electrical technician at telecommunications company
- Work at a recording studio as an electrical engineer
- Work at a recording studio as a technician

MINIMUM ADMISSION REQUIREMENTS:

Grade 9 with Mathematics or any other Equivalent Qualification.

FUNDAMENTAL MODULES IN ALL NC(V) PROGRAMMES

English First Additional Language

Mathematics and Life Orientation



ENGINEERING & RELATED DESIGN (ERD)

OFFERED AT VRYHEID CAMPUS

LEVEL 2-4 (ANNUAL COURSE)- DURATION: 3 YEARS

WHAT IS AN ENGINEERING AND RELATED DESIGN?

Briefly Engineering and Related Design is all aspects of engineering design in the mechanical, geological and fabrication engineering fields. This course integrates academic knowledge and theory with practical skills and drawings.

MODULES

- Engineering Fundamentals
- Engineering Technology
- Automotive Repair and Maintenance
- Engineering Systems

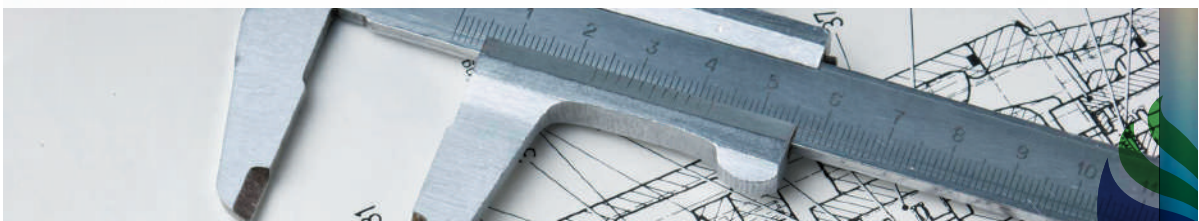
These Modules are offered at each of the different NQF Level of study in the National Certificate (Engineering and Related Design) qualification.

VOCATIONAL ACTIVITIES TO GAIN ACCESS TO:

- Participate in the designing and construction of buildings
- Take part in the operation and maintenance of machines
- Take part in the manufacturing of tools, machines, engines, etc
- Extract tools, equipment and processes to produce components
- Sketches and computer aided designs CAD
- Interpret & produce engineering drawings, maps

MINIMUM ADMISSION REQUIREMENTS:

Grade 9 with Mathematics or any other Equivalent Qualification.
FUNDAMENTAL MODULES IN ALL NC(V) PROGRAMMES
English First Additional Language
Mathematics and Life Orientation



HOSPITALITY

OFFERED AT KWA GQIKAZI CAMPUS

LEVEL 2-4 (ANNUAL COURSE) – DURATION:3 YEARS

WHAT IS HOSPITALITY?

In a nutshell, hospitality studies provide the students with theoretical and practical skills to operate as a cook, waitron or accommodation assistant in various hospitality establishments.

This programme will also include some client service and human relations skills. This programme integrates academic knowledge and theory with practical skills and values.

MODULES

- Food Preparation
- Hospitality Generics
- Hospitality Services
- Client Services and Human Relations

These Modules are offered at each of the different NQF Level of study in the National Certificate (Hospitality) qualification.

VOCATIONAL ACTIVITIES TO GAIN ACCESS TO:

- Manage a Guest House
- Work at Hotel/Motel
- Work as an assistant cook/ chef preparing food in a restaurant, hotel or guest house
- Work as a waitron
- Work as a housekeeper in a hotel, inn or guesthouse

MINIMUM ADMISSION REQUIREMENTS:

Grade 9 with Mathematics or Mathematical Literacy or any other Equivalent Qualification.

FUNDAMENTAL MODULES IN ALL NC(V) PROGRAMMES

English First Additional Language

Mathematics, Mathematical Literacy and Life Orientation



OFFICE ADMINISTRATION

OFFERED AT VRYHEID, NQUTHU, KWA GQIKAZI & MAPUTA CAMPUSES

LEVEL 2-4 (ANNUAL COURSE)- DURATION: 3 YEARS

WHAT IS OFFICE ADMINISTRATION?

In a nutshell the purpose of this programme is to equip the students with knowledge and skills for successful entry into an administrative secretarial field in any sector. Administration competencies apply to all industries; the formal and informal commercial sectors as well as non- commercial sector. This programme integrates theoretical learning with practical skills.

MODULES

- Business Practice
- Office Practice
- Office Data Processing
- New Venture Creation

These subjects are offered at each of the different NQF Level of study in the National Certificate (Office Administration) qualification.

VOCATIONAL ACTIVITIES TO GAIN ACCESS TO:

- Coordinate office correspondence
- Type letters, reports, memoranda, agendas, minutes, etc
- Perform receptionist duties
- Coordinate and organize functions
- Organize meetings, staff travel itineraries and accommodation
- Perform accounting duties

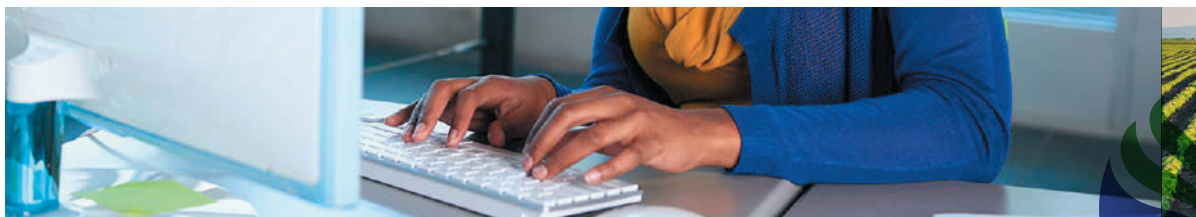
MINIMUM ADMISSION REQUIREMENTS:

Grade 9 with Mathematics or Mathematical Literacy or any other Equivalent Qualification.

FUNDAMENTAL MODULES IN ALL NC(V) PROGRAMMES

English First Additional Language

Mathematics or mathematical Literacy and Life Orientation



PRIMARY AGRICULTURE

OFFERED AT EMANDLENI (ULUNDI) CAMPUSES

LEVEL 2-4 (ANNUAL COURSE) – DURATION:3 YEARS

WHAT IS PRIMARY AGRICULTURE?

In a nutshell the Primary Agriculture programme covers all sciences around plant and animal production and nutrition as well as the economical impact thereof. With this programme you can enter the agriculture field either as a farmer, manager or advisor. This programme integrates academic knowledge and theory with practical skills and values.

MODULES

- Plant Production
- Animal Production
- Farm Planning and Mechanization
- Soil Science
- Agri-business
- Advanced Plant Production

These Modules are offered at each of the different NQF Level of study in the National Certificate (Primary Agriculture) qualification.

VOCATIONAL ACTIVITIES TO GAIN ACCESS TO:

- Advise farmers on farming techniques/ methods
- Work at a nursery, botanical garden etc
- Work at a company, advising farmers on management of finances
- Advise farmers on marketing, advertising and selling agricultural products
- Work as a production planner for crops and animal enterprises
- Plant and animal production

MINIMUM ADMISSION REQUIREMENTS:

Grade 9 with Mathematics or Mathematical Literacy or any other Equivalent Qualification.

FUNDAMENTAL MODULES IN ALL NC(V) PROGRAMMES

English First Additional Language

Mathematics or mathematical Literacy and Life Orientation



TOURISM

OFFERED AT EMANDLENI (ULUNDI) CAMPUS

LEVEL 2-4 (ANNUAL COURSE) – DURATION: 3 YEARS

WHAT IS TOURISM?

The tourism certificate programme covers tourism principles like tour guiding, tour operators and game rangers together with any public relations related vocation in the tourism and hospitality industry. This programme integrates academic knowledge and theory with practical skills and values.

MODULES

- Science of Tourism
- Client Services and Human Relations
- Sustainable Tourism in SA
- Tourism Operations

These Modules are offered at each of the different NQF Level of study in the National Certificate (Tourism) qualification.

VOCATIONAL ACTIVITIES TO GAIN ACCESS TO:

- Work as tour guide
- Own a tourism business
- Drive Tourists around
- Work at a hotel
- Work at a casino
- Provide an opportunity to Market South Africa
- Work at a game reserve etc

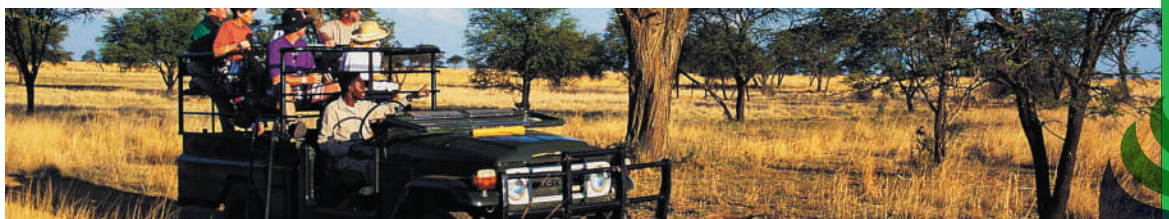
MINIMUM ADMISSION REQUIREMENTS:

Grade 9 with Mathematics or Mathematical Literacy or any other Equivalent Qualification.

FUNDAMENTAL MODULES IN ALL NC(V) PROGRAMMES

English First Additional Language

Mathematics or mathematical Literacy and Life Orientation



NATIONAL DIPLOMA PROGRAMMES

This qualification is primarily aimed at giving a student theoretical knowledge, practical knowledge and workplace knowledge and skills required in their chosen vocational area.

The design of the qualification enables students to progressively obtain the qualification by completing the related N1, N2, N3, N4, N5 and N6 courses, in a particular vocational area.

NATED PROGRAMMES OFFERED BY MTHASHANA TVET COLLEGE

Mthashana TVET College offers the N1-N6 courses both full-time and part-time.

The full-time component is offered by:

Business Studies (N4-N6):

OFFERED AT KWA GQIKAZI & VRYHEID CAMPUSES

- National Diploma Business Management
- National Diploma Human Resource Management
- National Diploma Management Assistant
- National Diploma Farming Management
- National Diploma Financial Management
- National Diploma Tourism Management
- National Diploma Public Management

Engineering Studies (N1-N6)

OFFERED AT VRYHEID, NQUTHU & NONGOMA CAMPUSES

- Mechanical Engineering
- Electrical Engineering
- Civil Engineering

MINIMUM ADMISSION REQUIREMENTS:

Grade 12 or any other equivalent qualification.

REPORT 191 (NATED)

MINIMUM ADMISSION REQUIREMENTS:

Grade 12 or any Equivalent Qualification.

NATIONAL N DIPLOMA QUALIFICATION

Students who have obtained the N6 Certificate and completed 18 months relevant practical experience may apply to the Department of Higher Education & Training. Application forms available at the campus for the National N Diploma (equivalent to Matriculation plus 3years)

NATIONAL DIPLOMA BUSINESS MANAGEMENT

OFFERED AT KWA GQIKAZI CAMPUS

N4-N6 (SEMESTER COURSE) – 6 MONTHS PER LEVEL

WHAT IS BUSINESS MANAGEMENT?

The Business Management Diploma provides thorough basis on which to launch an exciting career in a wide variety of finance, business and retail-related fields.

MODULES

- Entrepreneurship
- Management communication
- Sales Management
- Financial accounting
- Computer Practice

POSSIBLE CAREERS

- Business Manager
- Business Analyst
- Marketer
- Market Researcher
- Small Business Manager (Entrepreneur)

REPORT 191 (NATED)

MINIMUM ADMISSION REQUIREMENTS:

Grade 12 or any Equivalent Qualification.

NATIONAL N DIPLOMA QUALIFICATION

Students who have obtained the N6 Certificate and completed 18 months relevant practical experience may apply to the Department of Higher Education & Training
Application forms available at the campus for the National N Diploma (equivalent to Matriculation plus 3years)



NATIONAL DIPLOMA HUMAN RESOURCE MANAGEMENT

OFFERED AT KWA GQIKAZI & NQUTHU CAMPUSES

N4-N6 (SEMESTER COURSE)

WHAT IS HUMAN RESOURCE MANAGEMENT?

Human Resource Management is the organizational function that deals with issues related to people such as compensation, hiring, performance management, organization development, safety, wellness, benefits, employee motivation, communication, administration and training.

MODULES

- Personnel Management
- Management Communication
- Computer Practice
- Personnel Training
- Labour Relations

POSSIBLE CAREERS

- Human Resources Practitioner
- Personnel Consultant
- Labour Relations Officer
- Personnel Trainer
- Personnel Manager
- General Manager

REPORT 191 (NATED)

MINIMUM ADMISSION REQUIREMENTS:

Grade 12 or any Equivalent Qualification.

NATIONAL N DIPLOMA QUALIFICATION

Students who have obtained the N6 Certificate and completed 18 months relevant practical experience may apply to the Department of Higher Education & Training
Application forms available at the campus for the National N Diploma (equivalent to Matriculation plus 3years)



NATIONAL DIPLOMA MANAGEMENT ASSISTANT

OFFERED AT MAPUTA, VRYHEID & NQUTHU CAMPUSES

N4-N6 (SEMESTER COURSE)

WHAT IS MANAGEMENT ASSISTANT?

The Management Assistant is the right hand of a manager, even supporting a group of managers or a whole department. Behind every successful business is a strong, supportive management assistant. This can be a very rewarding career where one assistant can form a team with other assistants to lead or co-ordinate projects and events.

MODULES

- Computer Practice
- Communication
- Office Practice
- Information Processing

POSSIBLE CAREERS

- Personal Assistant
- Typist
- Secretary
- Receptionist
- General Office Work

MINIMUM ADMISSION REQUIREMENTS:

Grade 12 or any other equivalent qualification.

NATIONAL N DIPLOMA QUALIFICATION

Students who have obtained the N6 Certificate and completed 18 months relevant practical experience may apply to the Department of Higher Education and Training. Application forms are available at campus for the National N Diploma (equivalent to Matriculation plus 3 years)



NATIONAL DIPLOMA FARMING MANAGEMENT

OFFERED AT EMANDLENI (ULUNDI) CAMPUS

N4-N6 (SEMESTER COURSE)

WHAT IS FARMING MANAGEMENT

Farming Management is a science for helping to decide about the basic way to go about a farming business. Farming Management course equip farmers with knowledge and skills on what to produce, how much to produce, the size of the operation and how and where to market their produce.

MODULES

- Management: Farming
- Data Management: Farming
- Financial Management: Farming
- Maintenance Management: Farming
- Human Resource Management: Farming

POSSIBLE CAREERS

- Farmer
- Farm Supervisor
- Farm Manager
- Agricultural Product Representative
- Farming Consultant
- Agricultural Produce Marketer
- Product Inspector

REPORT 191 (NATED)

MINIMUM ADMISSION REQUIREMENTS:

Grade 12 or any Equivalent Qualification.

NATIONAL N DIPLOMA QUALIFICATION

Students who have obtained the N6 Certificate and completed 18 months relevant practical experience may apply to the Department of Higher Education & Training
Application forms available at the campus for the National N Diploma (equivalent to Matriculation plus 3years)



NATIONAL DIPLOMA FINANCIAL MANAGEMENT

OFFERED AT KWA GQIKAZI & VRYHEID CAMPUSES

N4-N6 (SEMESTER COURSE)-6 MONTHS PER LEVEL

WHAT IS FINANCIAL MANAGEMENT?

Financial Management studies corporate finance and capital markets, emphasizing the financial aspects of managerial decisions. It touches on all areas of finance, including the valuation of real and financial assets, risk management and financial derivatives, the trade-off between risk and dividend policy. The course draws heavily on empirical research to help guide managerial decisions.

MODULES

- Entrepreneurship and Business Management
- Financial Accounting
- Computerised Financial Systems
- Managerial Communication

POSSIBLE CAREERS

- Management Accountant
- Assistant Director of Finance
- Financial Planning Manager
- Head of Financial Department

REPORT 191 (NATED)

MINIMUM ADMISSION REQUIREMENTS:

Grade 12 or any Equivalent Qualification.

NATIONAL N DIPLOMA QUALIFICATION

Students who have obtained the N6 Certificate and completed 18 months relevant practical experience may apply to the Department of Higher Education & Training

Application forms available at the campus for the National N Diploma (equivalent to Matriculation plus 3 years)



NATIONAL DIPLOMA TOURISM MANAGEMENT

OFFERED AT EMANDLENI CAMPUS

N4-N6 (SEMESTER COURSE) – 6 MONTHS PER LEVEL

WHAT IS TOURISM MANAGEMENT?

Tourism Management is a course that focuses on the management and administration aspects of tourism. Students can expect to learn more about managing tourist attractions, travelling arrangements and accommodation. The course content focuses specifically on the essential business skills one needs when working within the tourism industry, equipping students with the knowledge and expertise to deal with all human resources-related issues within this field.

MODULES

- Tourism Destination
- Travel Office Procedure
- Travel Service
- Tourism Communication

POSSIBLE CAREERS

- Travel Writer/ Photographer
- Tourism/Visitor Information Counsellor
- Visitor Information Centre Supervisor
- Tourism Trainer
- Tourism Researcher
- Executive Officer-Marketing
- Marketing Manager
- Retail Sales Clerk
- Manager of Travel Trade Sales
- Agricultural Produce Marketer
- Product Inspector

REPORT 191 (NATED)

MINIMUM ADMISSION REQUIREMENTS:

Grade 12 or any Equivalent Qualification.

NATIONAL N DIPLOMA QUALIFICATION

Students who have obtained the N6 Certificate and completed 18 months relevant practical experience may apply to the Department of Higher Education & Training
Application forms available at the campus for the National N Diploma (equivalent to Matriculation plus 3years)



NATIONAL DIPLOMA PUBLIC MANAGEMENT

OFFERED AT KWA GQIKAZI & VRYHEID CAMPUSES

N4-N6 (SEMESTER COURSE) – 6 MONTHS PER LEVEL

WHAT IS PUBLIC MANAGEMENT?

Public Management education programs offers a variety of general management skills. They can also teach you how to apply these skills to the management of non-profit or governmental programs. Typical topics you might study in a public management program include marketing management, negotiation strategies, planning, philanthropy, public policy and economics.

MODULES

- Public Administration
- Management Communication
- Computer Practice
- Entrepreneurship & Business Management

VOCATIONAL ACTIVITIES TO GAIN ACCESS TO:

- Public Sector General Manager
- Public Sector Administration Manager
- Public Sector Human Resource Manager
- National, Provincial and Local Government Administrator

REPORT 191 (NATED)

MINIMUM ADMISSION REQUIREMENTS:

Grade 12 or any Equivalent Qualification.

NATIONAL N DIPLOMA QUALIFICATION

Students who have obtained the N6 Certificate and completed 18 months relevant practical experience may apply to the Department of Higher Education & Training
Application forms available at the campus for the National N Diploma (equivalent to Matriculation plus 3 years)



NATIONAL DIPLOMA MECHANICAL ENGINEERING

OFFERED AT VRYHEID CAMPUS

N1-N6 (TRIMESTER COURSE)

WHAT IS MECHANICAL ENGINEERING?

Mechanical Engineering involves the repair and maintenance of machines which range from simple mechanism to complex machinery such as motor vehicles.

This programme is designed to provide the theory for the Mechanical Trade. The practical component (which is optional) will be offered after completion of the theory.

MODULES

Mathematics

- Engineering Science
- Engineering Drawing
- Motor/Diesel Trade Theory
- Mechanotechnics
- Industrial Electronics

POSSIBLE CAREERS

Artisans for:

- Automotive Repairing
- Motor Mechanics
- Panel Beating
- Car Manufacturing
- Mechanical Engineering

MINIMUM ADMISSION REQUIREMENTS:

Grade 12 with Mathematics or any other equivalent qualification.

NATIONAL N DIPLOMA QUALIFICATION

Students who have obtained the N6 Certificate and completed 24 months relevant practical experience may apply to the Department of Higher Education and Training. Application forms are available at campus for the National N Diploma (equivalent to Matriculation plus 3 years)



NATIONAL DIPLOMA ELECTRICAL ENGINEERING

OFFERED AT VRYHEID, NQUTHU & NONGOMA CAMPUSES

N1-N6 (TRIMESTER COURSE)

WHAT IS ELECTRICAL ENGINEERING?

Electrical Engineering sometimes referred to as Electrical and Electronic Engineering is a field of engineering that deals with the study and application of electricity, electronics and electromagnetism. It covers a range of subtopics including power, electronics, control systems, signal processing and telecommunications.

MODULES

- Mathematics
- Engineering Science
- Power Machines
- Digital Electronics
- Industrial Electronics
- Electrical Trade Theory
- Control Systems
- Electrotechnics

POSSIBLE CAREERS

Artisans design, Develop, Test and Supervise the Deployment of Electrical Systems and Electronic Devices.

Examples:

- Work on the design of telecommunications systems
- Operation of electric power stations
- Lighting and wiring of buildings
- Repair and design of household appliances

MINIMUM ADMISSION REQUIREMENTS:

Grade 12 with Mathematics or any other equivalent qualification.

NATIONAL N DIPLOMA QUALIFICATION

Students who have obtained the N6 Certificate and completed 24 months relevant practical experience may apply to the Department of Higher Education & Training
Application forms available at the campus for the National N Diploma (equivalent to Matriculation plus 3years)



NATIONAL DIPLOMA CIVIL ENGINEERING

OFFERED AT NONGOMA CAMPUS

N1-N6 (TRIMESTER COURSE)

WHAT IS CIVIL ENGINEERING?

Civil Engineers design and supervise the construction of the essential structures that are often taken for granted in our daily lives. Examples are water supply systems, which include dams and major pipelines; transportation such as roads, railways, airports and harbors; and structures such as bridges, sports stadiums, office blocks and convention centres.

MODULES

- Building and Structural Construction
- Building and Structural Surveying
- Quantity Surveying
- Building Science
- Mathematics

POSSIBLE CAREERS

- Quantity Surveyor
- Drainage Inspection
- Industrial designing
- Bricklaying
- Plastering
- Cabinet Making
- Tiling

MINIMUM ADMISSION REQUIREMENTS:

Grade 12 with Mathematics or any other equivalent qualification.

NATIONAL N DIPLOMA QUALIFICATION

Students who have obtained the N6 Certificate and completed 24 months relevant practical experience may apply to the Department of Higher Education and Training. Application forms are available at campus for the National N Diploma (equivalent to Matriculation plus 3 years)



DO YOU NEED FINANCE FOR NC(V) OR REPORT 191 PROGRAMME?

NSFAS Bursaries Are Available Upon Application To All Suitably Qualifying Prospective Students:

Overarching Criterion

- Financial Neediness
- Academic Worthiness

Application Process

- All NSFAS application will be done online on www.nsfas.org.za
- Prospective students will have to create a MyNSFAS profile
- MyNSFAS profile will be the mode of communication between the student and NSFAS until the completion of their studies

Tuition Subsidy

- Qualifying Students Will Receive 100% Tuition Subsidy
- NSFAS Desk Will Provide You With More Specific Information
- Contact details can be updated on MyNSFAS
- NSFAS will use the contact details supplied by the applicant (cell phone and email address) to communicate with the applicant about the status of their application

CENTRAL OFFICE

266 South Street, Vryheid 3100
Tel: 034 980 1010 - Fax: 034 980 1012
Private Bag X9424, Vryheid 3100

VRYHEID BUSINESS CAMPUS

92 Hlobane Street, Vryheid 3100
PO Box 725, Vryheid 3100
Tel: 034 981 5337 - Fax: 034 980 7918

VRYHEID ENGINEERING CAMPUS

9 Landdros Street Vryheid 3100
PO Box 725, Vryheid 3100
Tel: 034 980 1018 / Fax 034 980 1047

NQUTHU CAMPUS

Lot 1557 Mangosuthu Drive, Nquthu 3135
PO Box 584, Nquthu 3135
Tel: 034 271 1514 - Fax: 034 271 0050

KwaGQIKAZI CAMPUS

22A Nongoma MAin Road, Nongoma 3950
Private Bag X5003, Nongoma 3950
Tel: 035 831 3202 - Fax: 035 831 3205

NONGOMA CAMPUS

22A Nongoma MAin Road, Nongoma 3950
Private Bag X5003, Nongoma 3950
Tel: 035 831 6032/31/19 - Fax: 035 831 6017

EMANDLENI CAMPUS

Vulcan Farm,uLundi 3838
Private Bag X28, uLundi 3838
Tel: 035 879 1061 - fax: 035 879 1652

MAPUTA CAMPUS

Thandizwe Area, next to Shayina School
PO Box 895, Kwa Ngwanase 3973
Tel: 035 813 0100/01 - Fax 086 637 7763

BABANANGO CAMPUS

59 Justice Street, Babanango 3850
Private bag X9424, Vryheid 3100
Tel: 035 835 0200 - Fax: 035 835 0011